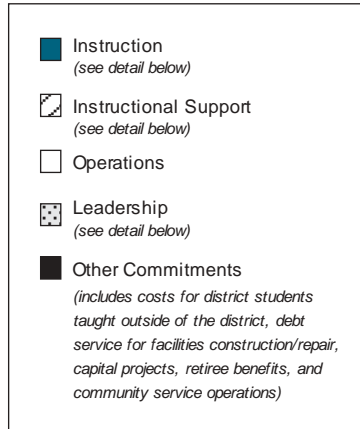
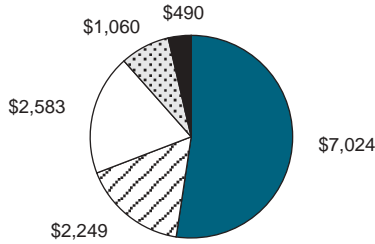


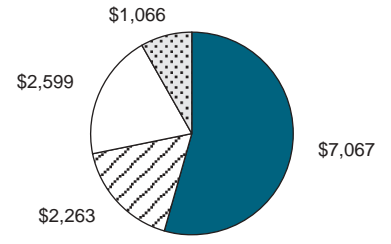
### Total per-pupil expenditures for all programs in this district

Data source: InSite

Per-pupil expenditures including Other Commitments and students served out-of-district  
Total: \$13,406



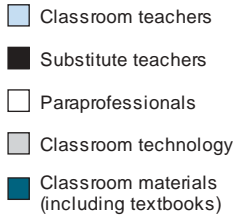
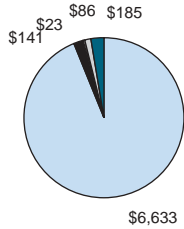
Per-pupil expenditures excluding Other Commitments and students served out-of-district  
Total: \$12,995



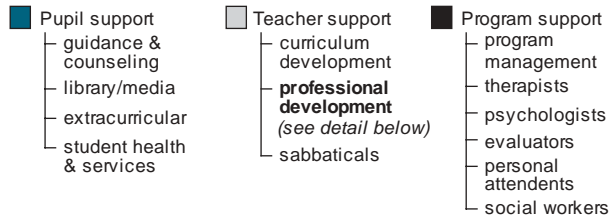
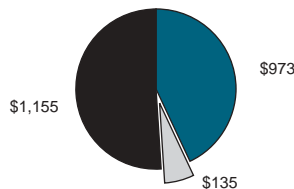
### Details from total per-pupil expenditures for all programs in this district

excluding Other Commitments and students served out-of-district

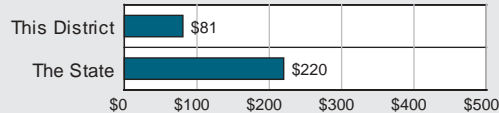
Per-pupil expenditures: Instruction Detail  
Total: \$7,067



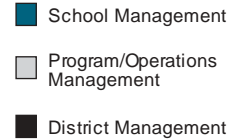
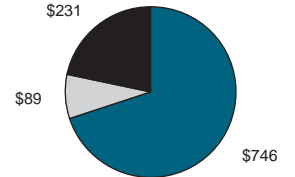
Per-pupil expenditures: Instructional Support Detail  
Total: \$2,263



Professional Development Detail (includes related substitute costs)



Per-pupil expenditures: Leadership Detail  
Total: \$1,066



Data source: InSite

### Total per-pupil expenditures by educational program

including Other Commitments; excluding students served out-of-district

Educational Program	The State	This District	Number of Students: This District
General Education	\$9,220	\$10,515	2,328
Title I	\$536	\$382	292
Special Education	\$16,382	\$17,110	383
Career & Technical Education	\$4,249	\$10,023	7
English Language Learners	\$7,931	\$13,121	10

Data source: RIDE Office of Finance

### Sources of Revenue/Funding

