

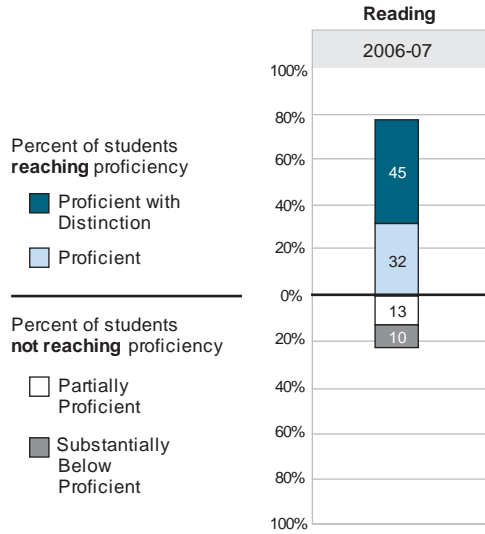


The Developmental Reading Assessment is administered annually in May to students in schools whose highest grade is kindergarten or 1st grade. RIDE uses the results of this test to determine the performance classification of these early-grade schools.

Grades PK-KG
Edda Carmadello, Principal
186 Students
25 Teachers

Assessment Results
This school's highest grade

Bar graphs may not sum to 100% due to rounding.

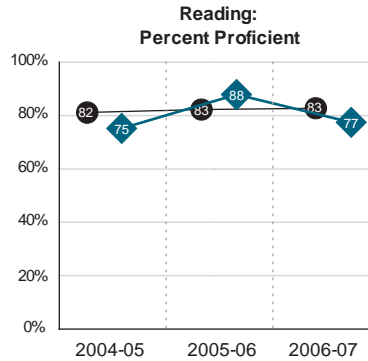


No other tests administered in this school level.

Performance Progress

R.I. early-grade schools

- ◆ This school
- R.I. elementary schools



No other tests administered in this school level.

Proficiency by Student Characteristics

Test results are not reported by student groups at this school level.