



The New England Common Assessment Program (NECAP) tests are administered annually in October to students in grades 3 through 8 and grade 11. RIDE uses the results of these tests to determine school-performance classifications and to measure school and district progress. Please note that this is the only report in Information Works! 2008 that includes data from the 2007-08 school year.

Grades 2-5
David Brissette, Principal
283 Students
32 Teachers

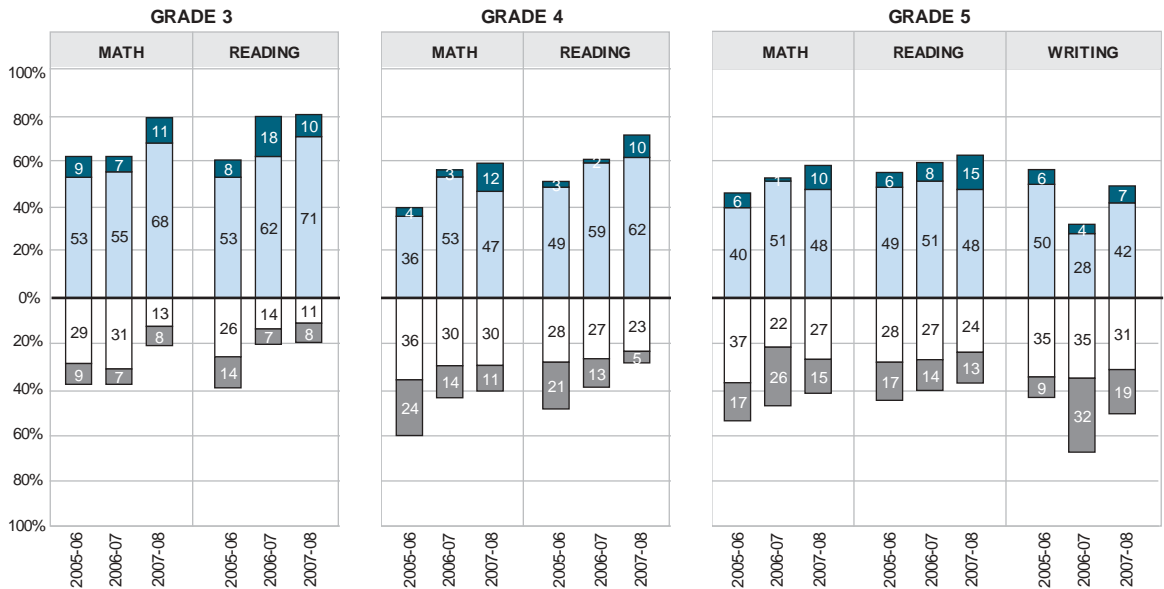
Assessment Results

Percent of students reaching proficiency

- Proficient with Distinction
- Proficient

Percent of students not reaching proficiency

- Partially Proficient
- Substantially Below Proficient

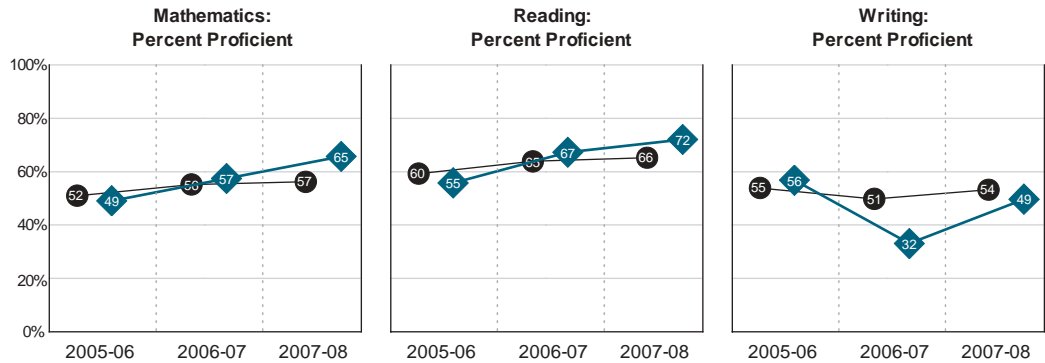


Missing data indicates fewer than 10 students tested. Bar graphs may not sum to 100% due to rounding.

Performance Progress

All tested grades

- ◆ This school
- R.I. elementary schools



Proficiency by Student Characteristics

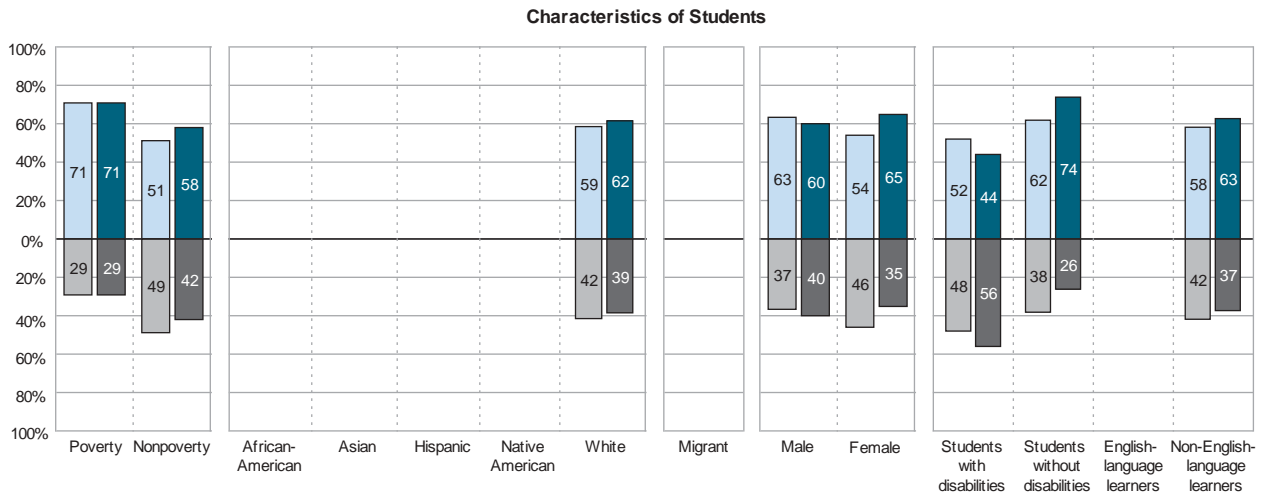
2007-08: Grade 5

Percent of students reaching proficiency

- Math
- Reading

Percent of students not reaching proficiency

- Math
- Reading



Missing data indicates fewer than 10 students tested.